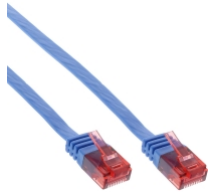


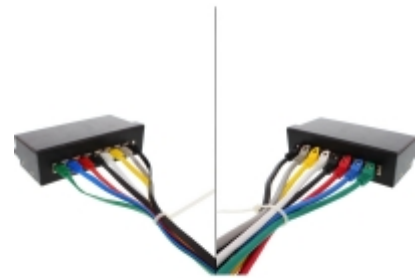
# InLine® Flat Ultraslim Patch Cable U/UTP Cat.6 Gigabit ready blue 10m



\* Preise inkl. gesetzlicher MwSt. zzgl. Versandkosten

Marke: INL

Bestell-Nr.: 71600B



- Ultra-flat patch cable
- 2x RJ45 plugs, moulded
- U/UTP cable Cat. 6
- AWG30 copper strands
- unshielded (old designation: UTP)
- Pin assignment 1:1 according to TIA/EIA 568B
- in recloseable PE bag with EAN code

## Artikeleigenschaften

Variante:	flach, CU
Schirmung:	U/UTP
Querschnitt:	AWG30
Typ:	Cat.6
Farbe:	blau
Stecker A:	RJ45 Stecker
Stecker B:	RJ45 Stecker
Signal:	Netzwerk

Länge:

10m