

12v. 7Ah. DSK Bat. Plomo Acido

EAN 8420738103248

Ref. 10324

Descripción:

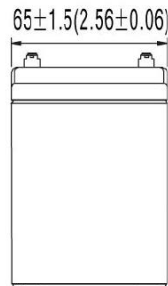
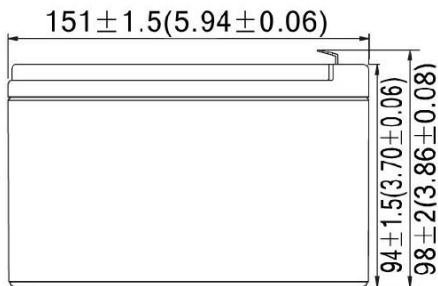
Batería Plomo DSK 12v. 7Ah

Especificaciones :

Tecnología AGM: Uso de separadores de fibra de vidrio entre las placas, con gran capacidad de absorción, para contener el electrolito



MODELO BATERIA	10324 (12v. 7Ah. DSK Bat. Plomo Acid)			
VIDA UTIL	3~5 años			
CAPACIDAD (25°C)	20HR(0.45A,10.5V)	10HR(0.80A,10.5V)	5HR(1.48A,10.5V)	1HR(4.31A,10.5V)
	7.00AH	6.63AH	5.95AH	4.05AH
DIMENSIONES	Longitud	Ancho	Altura	Altura Total
	151mm (5.94inch)	65mm (2.56inch)	94mm (3.70inch)	98mm (3.86inch)
PESO APROX	2.05 Kg (4.52 lbs) ±5%			
RESISTENCIA INTERNA	Carga completa at 25°C: ≤22mΩ			
DESCARGA	3% de reducción al mes (25°C)			
CAPACIDAD AFECTADA POR TEMP.(20HR)	40°C	25°C	0°C	-15°C
	102%	100%	85%	65%
VOLTAJE DE CARGA (25oC)	Ciclo normal		Ciclo en modo flotación	
	14.4-15.0V(-30mV/°C), max. Current: 2.10A		13.6-13.8V (-20mV/) °C	



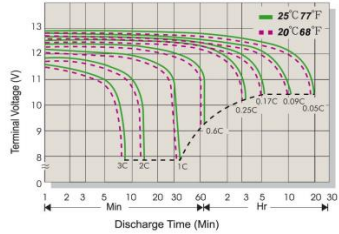
12v. 7Ah. DSK Bat. Plomo Acid



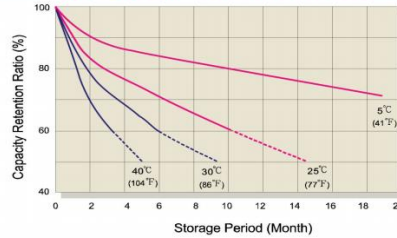
EAN 8420738103248

Ref. 10324

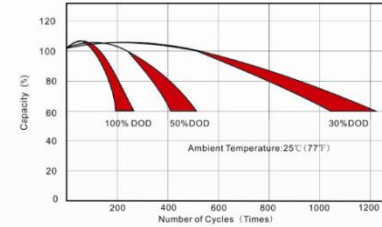
Terminal Voltage (V) and Discharge Time



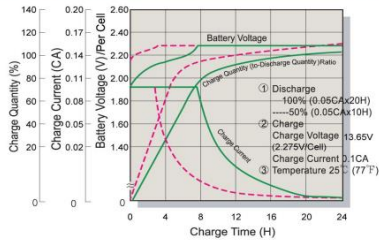
Capacity Retention Characteristic



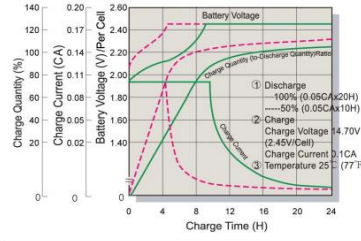
Cycle Service Life



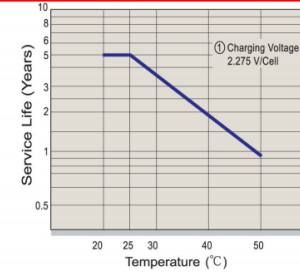
Battery Vlotage and Charge Time for Standby Use



Battery Vlotage and Charge Time for Cycle Use



Tickle(or Float) Service Life

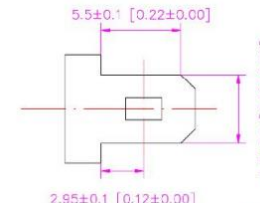


Constant Current Discharge(CC,Unit:A) at 25°C (77°F)

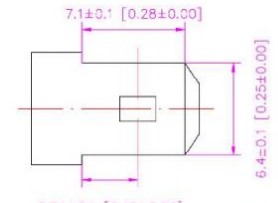
F.V/Time	5Min	10Min	15Min	30Min	1Hr	2Hr	3Hr	4Hr	5Hr	6Hr	10Hr	20Hr
1.85V/Cell	18.30	13.05	10.00	6.62	3.90	2.28	1.74	1.380	1.146	0.979	0.639	0.337
1.80V/Cell	18.64	13.30	10.19	6.75	3.98	2.32	1.77	1.406	1.168	0.998	0.651	0.344
1.75V/Cell	18.99	13.55	10.39	6.88	4.05	2.37	1.80	1.432	1.190	1.017	0.663	0.350
1.70V/Cell	20.70	14.36	11.01	7.15	4.12	2.41	1.83	1.458	1.211	1.034	0.675	0.356
1.67V/Cell	22.79	15.58	11.94	7.55	4.17	2.44	1.85	1.473	1.224	1.045	0.682	0.360
1.60V/Cell	24.69	16.39	12.57	7.87	4.21	2.46	1.87	1.489	1.237	1.057	0.689	0.364

Constant Power Discharge (CP,Unit:W) at 25°C (77°F)

F.V/Time	5Min	10Min	15Min	30Min	1Hr	2Hr	3Hr	4Hr	5Hr	6Hr	10Hr	20Hr
1.85V/Cell	35.68	25.44	19.51	12.92	7.61	4.45	3.38	2.69	2.23	1.91	1.25	0.66
1.80V/Cell	36.36	25.93	19.88	13.16	7.76	4.53	3.45	2.74	2.28	1.95	1.27	0.67
1.75V/Cell	37.04	26.41	20.25	13.41	7.90	4.62	3.51	2.79	2.32	1.98	1.29	0.68
1.70V/Cell	40.37	28.00	21.47	13.94	8.04	4.70	3.58	2.84	2.36	2.02	1.32	0.69
1.67V/Cell	44.45	30.37	23.29	14.72	8.13	4.75	3.61	2.87	2.39	2.04	1.33	0.70
1.60V/Cell	48.15	31.96	24.51	15.35	8.22	4.80	3.65	2.90	2.41	2.06	1.34	0.71



F1 Terminal



F2 Terminal

0.72±0.1 [0.03±0.00]

0.72±0.1 [0.03±0.00]