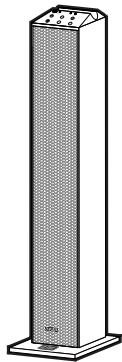


aiwa

JAPANESE ENGINEERING SINCE 1951

TSBT-270



TWS SOUND TOWER SPEAKER

aiwa

JAPANESE ENGINEERING SINCE 1951

Follow us! aiwaEU



www.eu-aiwa.com

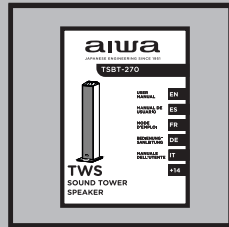
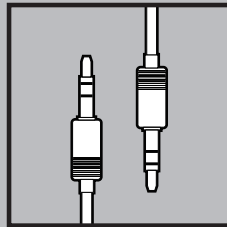
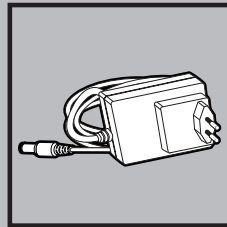
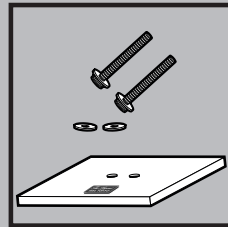
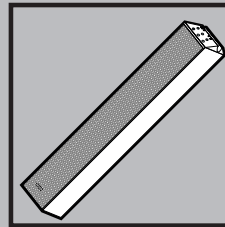
AIWA CO., LTD.
Shinagawa-Ku
TOKYO 141-0022, JAPAN

Printed in P.R.C.

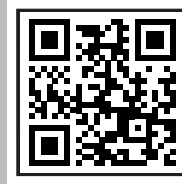


EG02A0710V.1

01. ACCESSORIES



+ aiwa



www.aiwa_europe.com

USER MANUAL EN

MANUAL DE USUARIO ES

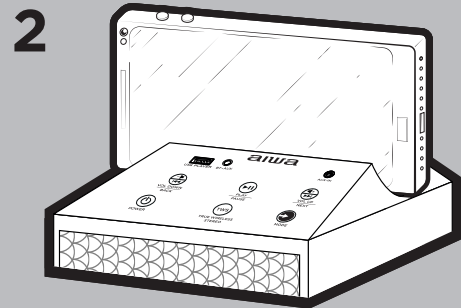
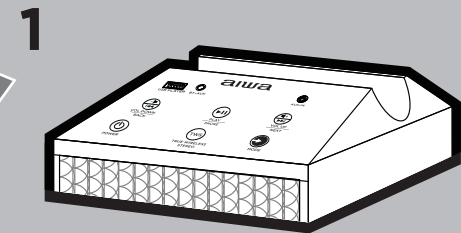
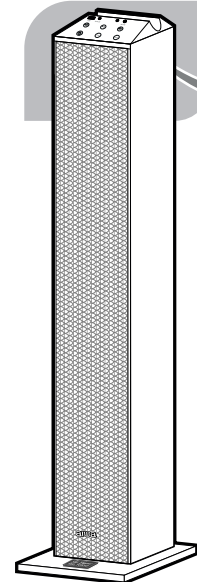
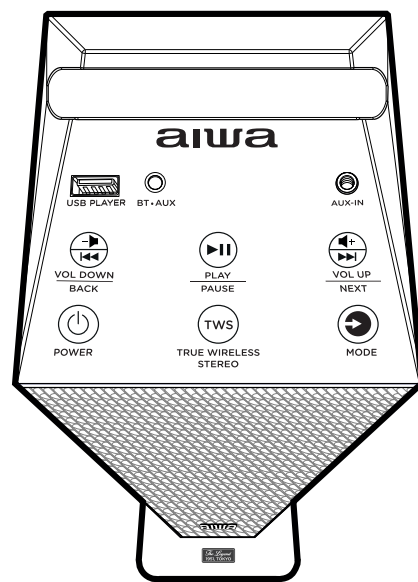
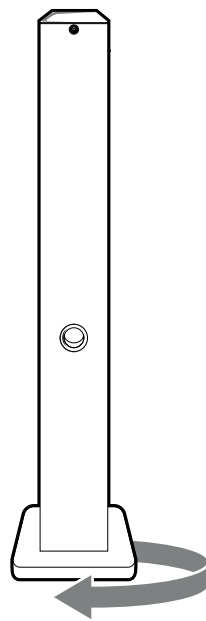
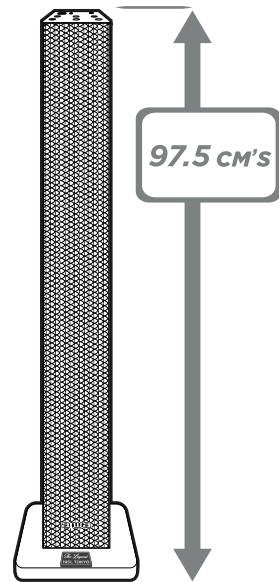
MODE D'EMPLOI FR

BEDIENUNG-SANLEITUNG DE

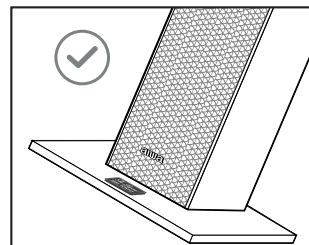
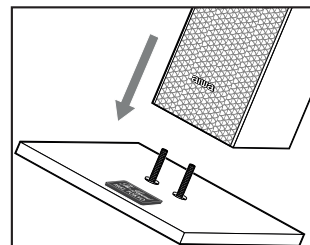
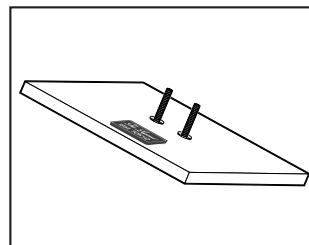
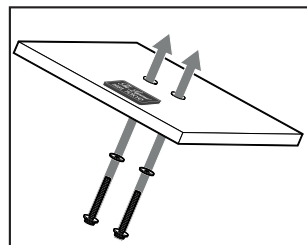
MANUALE DELL'UTENTE IT

+14

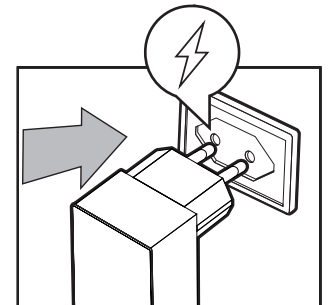
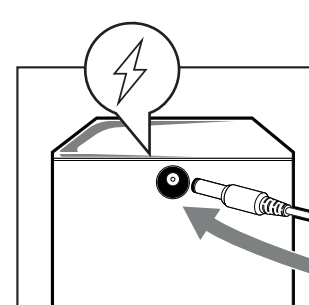
02. OVERALL VIEW



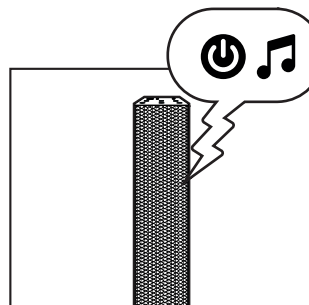
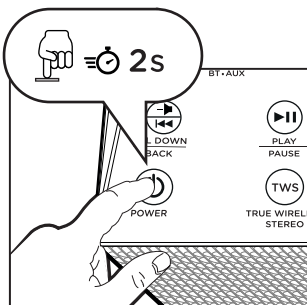
03. STAND INSTALLATION



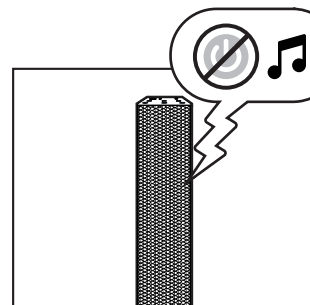
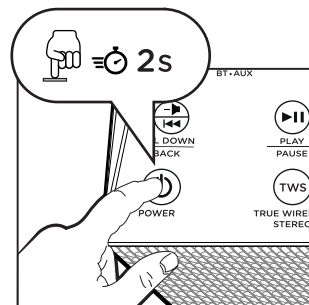
04. CONNECTION TO THE MAINS



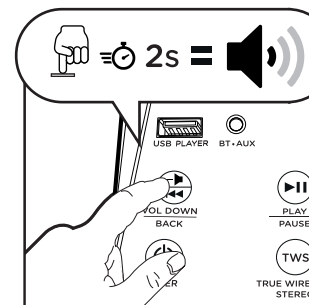
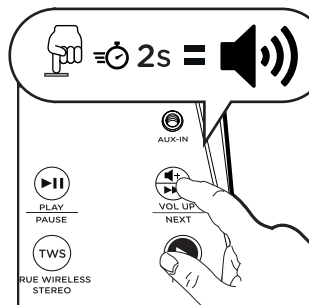
05. TURN ON



06. TURN OFF



07. VOLUME ADJUSTMENT



25W x2 RMS
POWER SOUND

HYPER BASS
QUALITY SOUND

TWS
TRUE WIRELESS STEREO

UP TO 10 METERS

USB READER

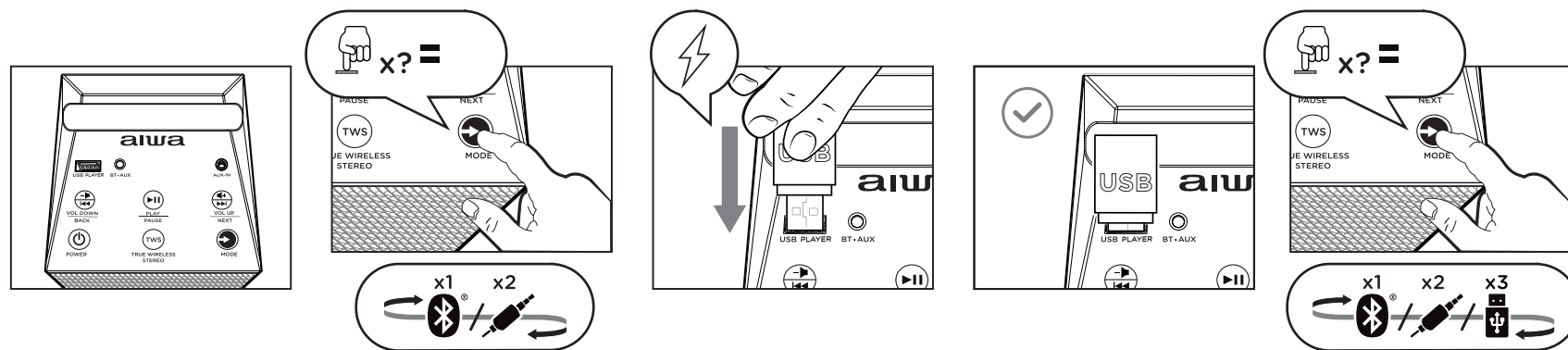
AUX IN

COMPATIBLE

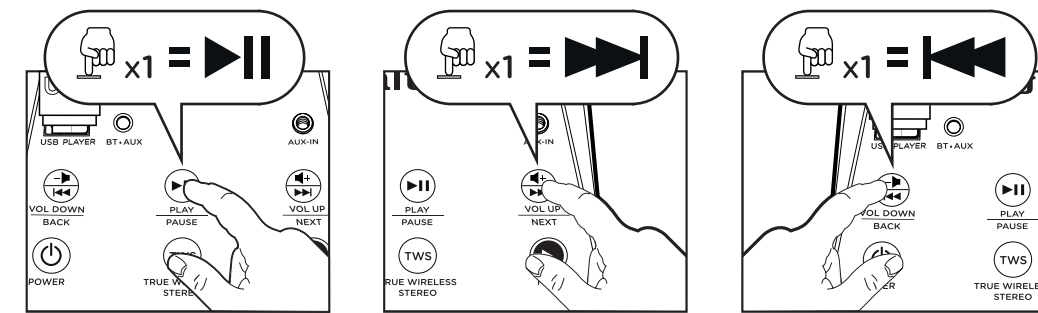
SUITABLE FOR ALL DEVICES

GADGET CRADLE

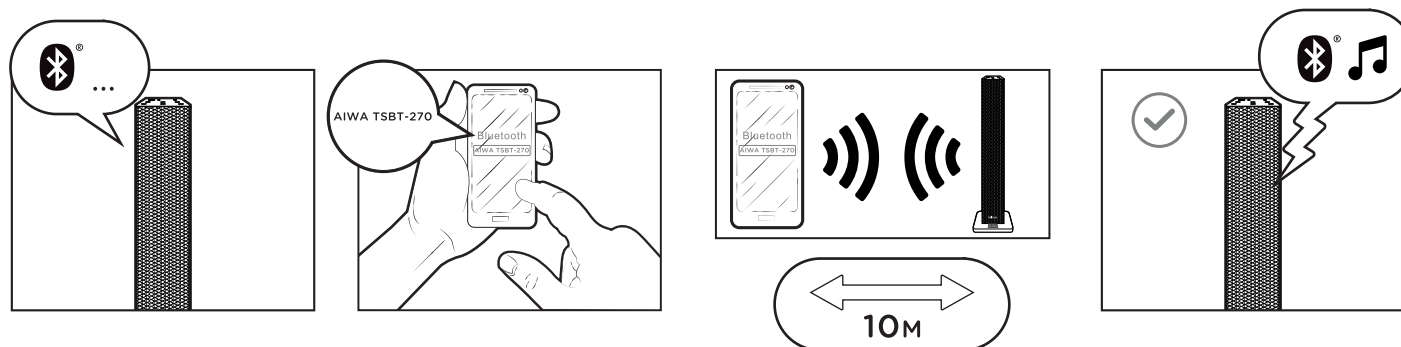
08. CHANGE THE FUNCTION MODE



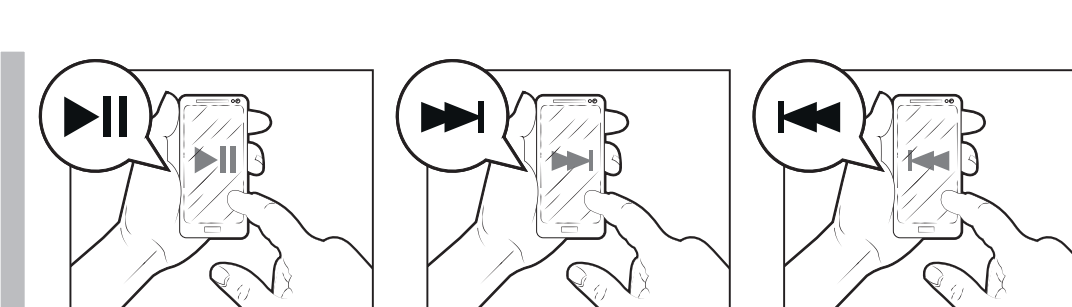
09. MUSIC PLAYBACK (USB & BLUETOOTH MODES)



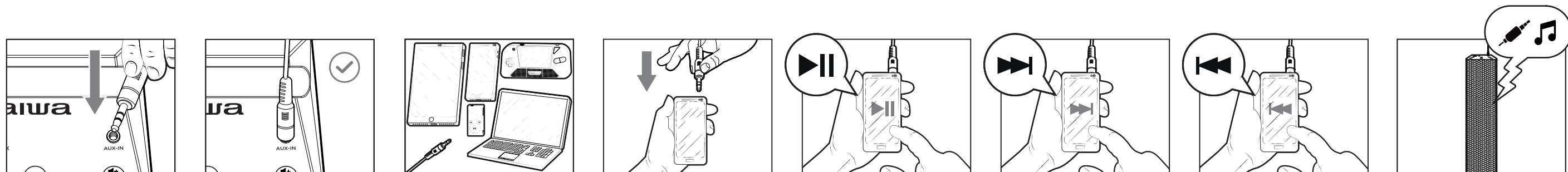
10. BLUETOOTH FUNCTION



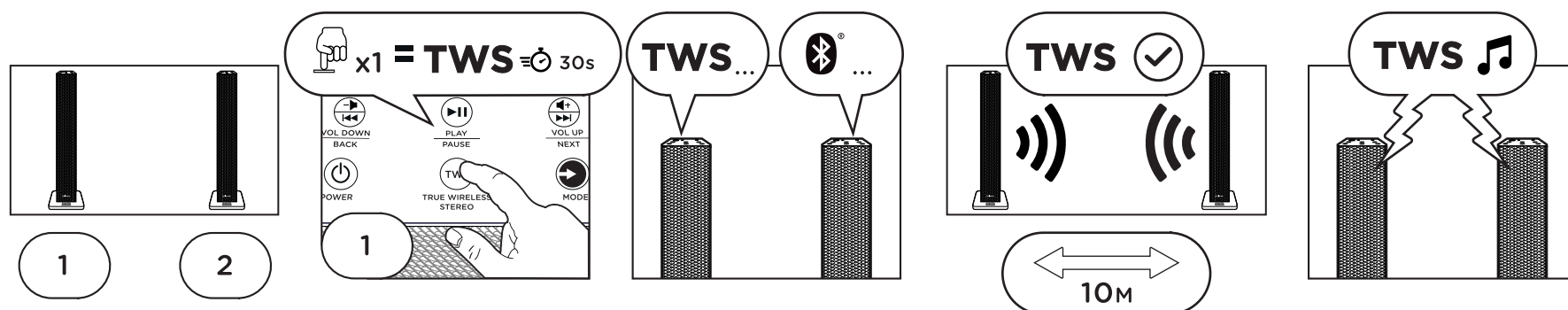
11. MUSIC PLAYBACK (FROM BLUETOOTH DEVICE)



12. MUSIC PLAYBACK (AUX-IN MODE)



13. TRUE WIRELESS STEREO FUNCTION (TWS)



ES- 01.Accesorios. 02.Vista general. 03.Instalación de la base. 04.Alimentación. 05.Encender. 06.Apagar. 07.Volumen. 08.Cambiar modo. 09.Reproducir música (modos USB y BT). 10.Conexión BT. 11.Reproducir música (desde un dispositivo BT). 12.Reproducir música (desde toma auxiliar). 13.Función TWS.
FR- 01.Accessoires. 02.Vue d'ensemble. 03.Installation de la base. 04.Alimentation électrique. 05.Allumer. 06.Arrêt. 07.Volume. 08.Change de mode. 09.Lecture de musique (modes USB e BT). 10.Connexion BT. 11.Lecture de musique (à partir d'un appareil BT). 12.Lecture de musique (à partir de la prise auxiliaire). 13.Fonction TWS.
IT- 01.Accessori. 02.Vista generale. 03.Installazione della base. 04.Alimentazione elettrica. 05.Accensione. 06.Spegnimento. 07.Volume. 08.Cambia modalità. 09.Riprodurre musica (modalità USB e BT). 10.Connessione BT. 11.Riprodurre musica (da un dispositivo BT). 12.Riprodurre musica (da presa ausiliaria). 13.Funzione TWS.
PT- 01.Acessórios. 02.Visão geral. 03.Instalação da base. 04.Alimentação eléctrica. 05.Ligar. 06.Desligar. 07.Volume. 08.Modos de função. 09.Reproduzir música (modos USB e BT). 10.Ligação BT. 11.Reproduzir música (a partir de um dispositivo BT). 12.Reproduzir música (de tomada auxiliar). 13.Funcção TWS.
DE- 01.Zubehör. 02.Allgemeine Ansicht. 03.Installation der Basis. 04.Stromversorgung. 05.Einschalten. 06.Ausschalten. 07.Volumen. 08.Funktionsmodus. 09.Musikwiedergabe (USB- und BT- Modus). 10.BT-Verbindung. 11.Musikwiedergabe (von einem BT- Gerät). 12.Musikwiedergabe (von der Hilfsbuchse). 13.TWS-Funktion.
SE- 01.Tillbehör. 02.Översikt. 03.Basinstallation. 04.Matning. 05.Sätta på. 06.Att stänga av. 07.Volym. 08.Funktionsläge. 09.Spela musik (USB- och BT-lägen). 10.BT-anslutning. 11.Spela musik (från en BT-enhet). 12.Spela musik (från hjälputtag). 13.TWS-funktion.
DK- 01.Tilbehør. 02.Generelt synspunkt. 03.Basinstallation. 04.Fodring. 05.Tænde for. 06.Att slukke. 07.Bind. 08.Funktionsstilstand. 09.Afspil musik (USB- og BT-tilstande). 10.BT-forbindelse. 11.Afspil musik (fra en BT-enhed). 12.Afspil musik (fra hjælpestik). 13.TWS-funktion.
NL- 01.Toebehoren. 02.Algemeen beeld. 03.Installatie van de basis. 04.Stroomvoorziening. 05.Aanzetten. 06.Stroomuitval. 07.Volume. 08.Wijzig de functiemodus. 09.Muziek spelen (USB- en BT-stand). 10.BT-verbinding. 11.Muziek spelen (vanaf een BT apparaat). 12.Muziek spelen (van een extra aansluiting). 13.TWS-functie.
FI- 01.Lisälaitteet. 02.Yleiskatsaus. 03.Jalustan asennus. 04.Ruokinta. 05.Kiihottua. 06.Sammuttaa. 07.Tilavuus. 08.Toimintatila. 09.Musiikin toisto (USB- ja BT-tilat). 10.BT-yhteys. 11.Musiikin toisto (BT-laitteesta). 12.Musiikin toisto (lisäpistorasiasta). 13.TWS-toiminto.
PL- 01.Akcesoria. 02.Przegląd. 03.Montaż podstawy. 04.Zasilanie. 05.Włączam. 06.Wyłączyć zasilanie. 07.Tom. 08.Zmień tryb działania. 09.Odtwarzanie muzyki (tryby USB i BT). 10.Połączenie BT. 11.Odtwarzanie muzyki (z urządzenia BT). 12.Odtwarzanie muzyki (z gniazdka pomocniczego). 13.Funkcja TWS.
CZ- 01.Příslušenství. 02.Přehled. 03.Základní instalace. 04.Krmení. 05.Zapnout. 06.Vypnout. 07.Hlasitost. 08.Funkční režim. 09.Přehrávejte hudbu (režim USB a BT). 10.BT spojení. 11.Přehrávejte hudbu (ze zařízení BT). 12.Přehrávejte hudbu (z pomocné zásuvky). 13.Funkce TWS.
HR- 01.Pribor. 02.Opći prikaz. 03.Ugradnja baze. 04.Hraniti. 05.Upaliti. 06.Isključiti. 07.Volumen. 08.Način rada. 09.Reprodukcija glazbu (USB u BT modusu). 10.BT veza. 11.Reprodukcija glazbu (s BT uređaja). 12.Reprodukcija glazbu (iz pomoćne utičnice). 13.Funkcija TWS.
SK- 01.Príslušenstvo. 02.Všeobecný pohľad. 03.Základná inštalácia. 04.Krmenie. 05.Zapnite. 06.Nypnite. 07.Hlasitosti. 08.Funkčný režim. 09.Prehrávanie hudbu (režim USB a BT). 10.BT spojenie. 11.Prehrávanie hudbu (zo zariadenia BT). 12.Prehrávanie hudbu (z pomocnej zásuvky). 13.Funkcia TWS.
HU- 01.Tartozék. 02.Áttekintés. 03.Alap telepítés. 04.Táplálás. 05.Bekapcsol. 06.Lekapcsolni. 07.Kötet. 08.Funkció mód. 09.Zene lejátszása (USB és BT mód). 10.BT kapcsolat. 11.Zene lejátszása (BT eszközzel). 12.Zene lejátszása (a kiegészítő aljzattól). 13.TWS funkció.
RO- 01.Accesorii. 02.Prezentare generală. 03.Instalarea bazei. 04.Hrănire. 05.Aprinde. 06.A opri. 07.Volum. 08.Mod funcție. 09.Redată muzică (de pe un dispozitiv BT). 10.Conexiune BT. 11.Redată muzică (de pe un dispozitiv BT). 12.Redată muzică (din priză auxiliară). 13.Funcția TWS.
CS- 01.Додатна опрема. 02.Преглед. 03.База на инсталација. 04.Храњење. 05.Укључити. 06.Да искључите. 07.Запремина. 08.Режим рада. 09.Репродукујте музику (УСБ и БТ режимима). 10.БТ веза. 11.Репродукујте музику (са БТ уређаја). 12.Репродукујте музику (из помоћне утичнице). 13.ТБС функција.
BG- 01.Акcesoари. 02.Преглед. 03.Базова инсталација. 04.Храњење. 05.Вкључи. 06.Да изкључи. 07.Сила на звука. 08.Функционален режим. 09.Пускајте музика (USB и БТ режимима). 10.БТ врска. 11.Пускајте музика (от БТ устројства). 12.Пускајте музика (от спомагателен гнездо). 13.ТБС функција.
GR- 01.Αξεσουάρ. 02.Επισκόπηση. 03.Εγκατάσταση βάσης. 04.Σίτιση. 05.Ανάβω. 06.Να κλιθεί. 07.Ενταση ΗΧΟΥ. 08.Λειτουργία λειτουργίας. 09.Αναπαραγωγή μουσικής (λειτουργίες USB και BT). 10.Σύνδεση BT. 11.Αναπαραγωγή μουσικής (από συσκευή BT). 12.Αναπαραγωγή μουσικής (από βοηθητική πρίζα). 13.Λειτουργία TWS.