

B-TECH AV MOUNTS®

SYSTEM X™

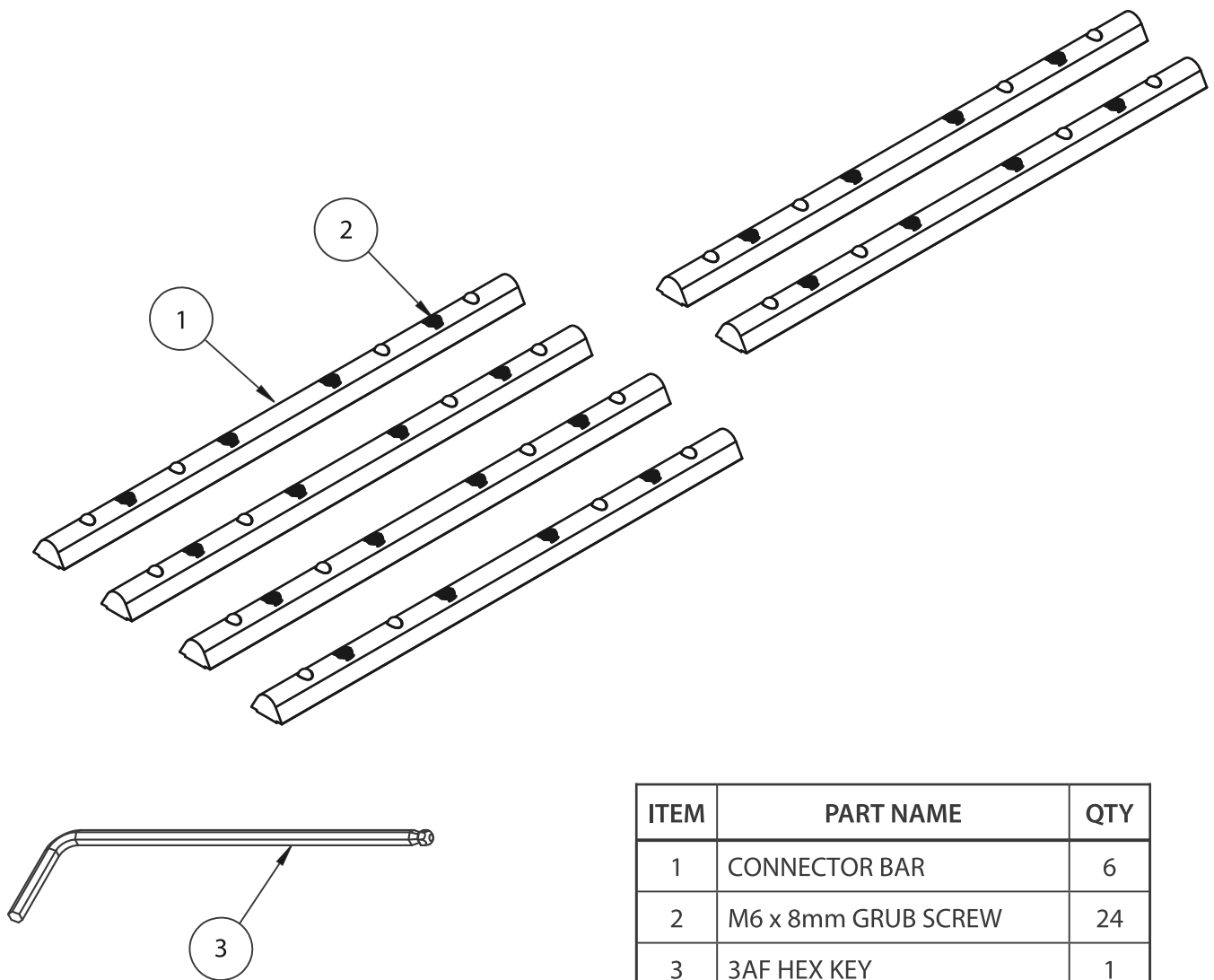
B-TECH AV MOUNTS

BT8390-EXT

RAIL EXTENSION KIT



PARTS LIST

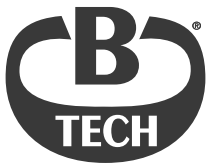


ITEM	PART NAME	QTY
1	CONNECTOR BAR	6
2	M6 x 8mm GRUB SCREW	24
3	3AF HEX KEY	1

Designed to work in conjunction with B-Tech's System X range



www.btechavmounts.com



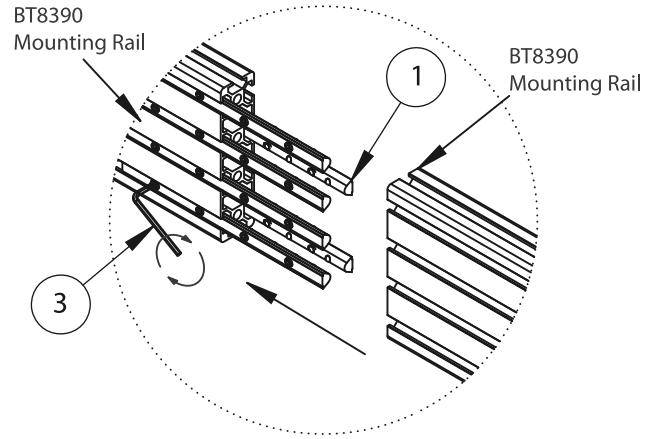
B-TECH AV MOUNTS®

BT8390-EXT

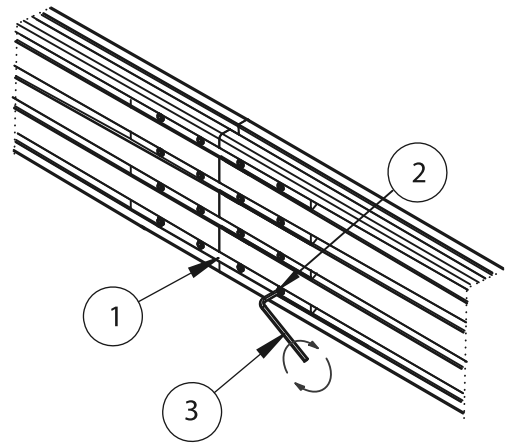
RAIL EXTENSION KIT

DESIGNED TO CONNECT TWO BT8390 MOUNTING RAILS TOGETHER

i. Insert halfway 4x *item 1* into the front side of the rail and 2x *item 1* into the back side, tighten *item 2* with *item 3*.

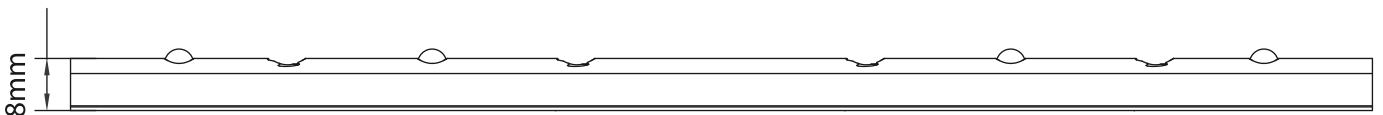


ii. Slide the other rail onto *item 1* and tighten *item 2*.

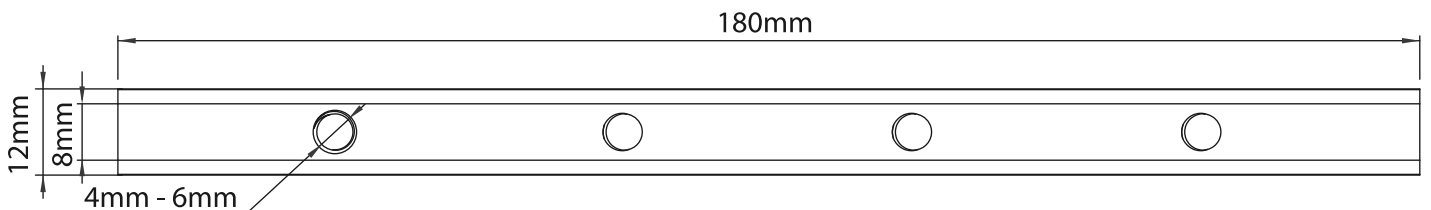


PRODUCT DIMENSIONS

SIDE VIEW



FRONT VIEW



CONTACT:
info@btechavmounts.com

©2021 B-Tech International Design & Manufacturing Ltd. All rights reserved.
 B-Tech AV Mounts is a division of B-Tech International Design & Manufacturing Ltd.
 B-Tech AV Mounts and the B-Tech logo are registered trade marks.
 All other brands and product names are trademarks of their respective owners.
 Photographs are for illustrative purposes only. E&OE.
 AMA-BT8390-EXT-V2.1-0921-104 MADE IN VIETNAM

